

# BALL VALVES WITH SIGHT GLASS & MOISTURE INDICATOR

## Applications

Ball valves and sight glass moisture indicators are used in a wide variety of air conditioning and refrigeration applications. A typical location for this combination product is in the liquid refrigerant line. The ball valve is used for isolating purposes; the sight glass for a visual display inside the line and the moisture indicator advises of the moisture content in the system.

## Main features

### Construction features

- Bi-directional flow
- Indicator on stem shows valve position - open or closed
- Positive stem stop ensures precise positioning
- Blow out proof stem
- Ball cavity vented to prevent over-pressure
- Vented seal cap
- Schrader valve option
- Mounting pad
- Large clear sight glass
- Positive colour contrast indicator
- Plastic protection cap for sight glass supplied as standard

### Sealing integrity features

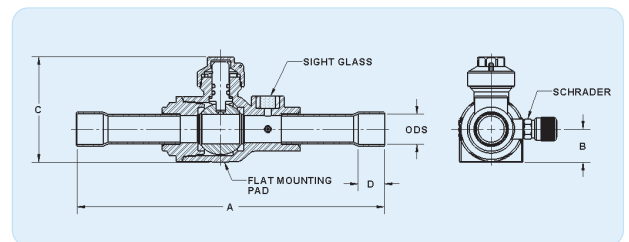
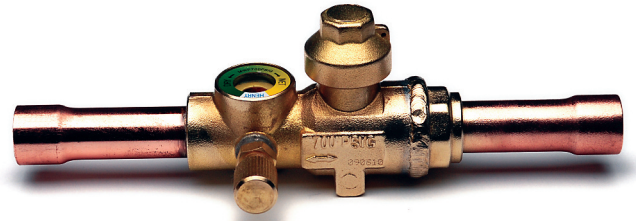
- Premium quality PTFE ball seals
- Double O-ring stem seal design
- Premium quality neoprene stem O-ring seals
- Hermetically sealed sight glass

## Technical Specification

Allowable operating temperature = -40°C to +120°C

Allowable operating pressure = 0 to 48 barg

Suitable for HFC and HCFC refrigerants and R744 along with their associated oils



BALL VALVES WITH SIGHT GLASS & MOISTURE INDICATOR

## Installation – Main issues

The brass body must be protected against excessive heat during installation to prevent damage to the seals. Full details are provided in the installation sheet, included with each valve

Part No		ODS (inch)	ODS (mm)	Dimensions (mm)					Port Size (mm)	Weight (Kg)	MWP (barg)	CE Cat
Standard	Schrader Valve			A	B	C	D	Mounting Pad hole thread Details - 2 off				
9072025G	9372025G	1/4		185	16	55	8	8-36 UNF-2B x 20 mm pitch	12.70	0.42	48	SEP
9072035G	9372035G	3/8		185	16	55	8	8-36 UNF-2B x 20 mm pitch	12.70	0.42	48	SEP
9072045G	9372045G	1/2		185	16	55	10	8-36 UNF-2B x 20 mm pitch	12.70	0.42	48	SEP
9072055G	9372055G	5/8	16	185	16	55	13	8-36 UNF-2B x 20 mm pitch	12.70	0.42	48	SEP
9073065G	9373065G	3/4		211	21	67	19	8-36 UNF-2B x 32 mm pitch	19.05	0.80	48	SEP
9073075G	9373075G	7/8	22	211	21	67	20	8-36 UNF-2B x 32 mm pitch	19.05	0.80	48	SEP
9074095G	9374095G	1 1/8		237	26	76	24	10-32 UNF-2B x 40 mm pitch	25.40	1.20	48	SEP

## MOISTURE COLOUR TABLE

Refrigerant	Moisture content (parts per million)			
	Temp (°C)	Indicator colour		
		Green	Chartreuse	Yellow
R404A	24	below 20	20-100	above 100
	38	below 35	35-130	above 130
	52	below 45	45-200	above 200
R410A	24	below 20	20-100	above 100
	38	below 30	30-120	above 120
	52	below 50	50-150	above 150
R134a	24	below 30	30-90	above 90
	38	below 50	50-120	above 120
	52	below 70	70-150	above 150
R22	24	below 20	20-85	above 85
	38	below 30	30-90	above 90
	52	below 45	45-110	above 110